

INSULATION FOAMS

Insulation foams for the lowest U-values

JUST FOAM IT.

TABLE OF CONTENTS

| | |
|----------------------------|----|
| GARGIULO products | 4 |
| Introduction | 6 |
| Qualities | 7 |
| U-value optimisation | 8 |
| Material comparison | 9 |
| Production processes | 10 |
| Combinations | 12 |
| Finishing | 13 |
| Packaging | 15 |
| Sustainability | 16 |
| We are GARGIULO | 18 |





INSULATION

GARGIULO PRODUCTS

We create thermal breaks made of PA and ABS, insulation foams made of PE/PET, PVC and ASA profiles, as well as our own PVC window systems in our production halls. We are also the perfect development partner for specific requirements and unusual projects with our own design and development department and our in-house toolmaking and jig construction.

Our advantage is maximum flexibility – both in planning and development as well as in our production processes. This enables us to meet the individual requirements of our customers at all times.

WINDOW SYSTEMS

Made of PVC: Our WINGO profile series meets the high standards in terms of aesthetics, statics, sound and thermal insulation and when it comes to outstanding technology and safety.

INSULATION FOAMS

Made of PE/HT foam, highly insulating, halogen-free, bio-based, resistant to high temperatures, also in combination with our thermal breaks, tailor-made.

THERMAL BREAKS

Made of recycled PA or ABS, compatible with your window system, with or without finishing – solutions according to the customer's wishes.

INSUFOX

Substructure profile made of PET, highly insulating, load-bearing construction material, individually adaptable contours.

INSULATION FOAMS

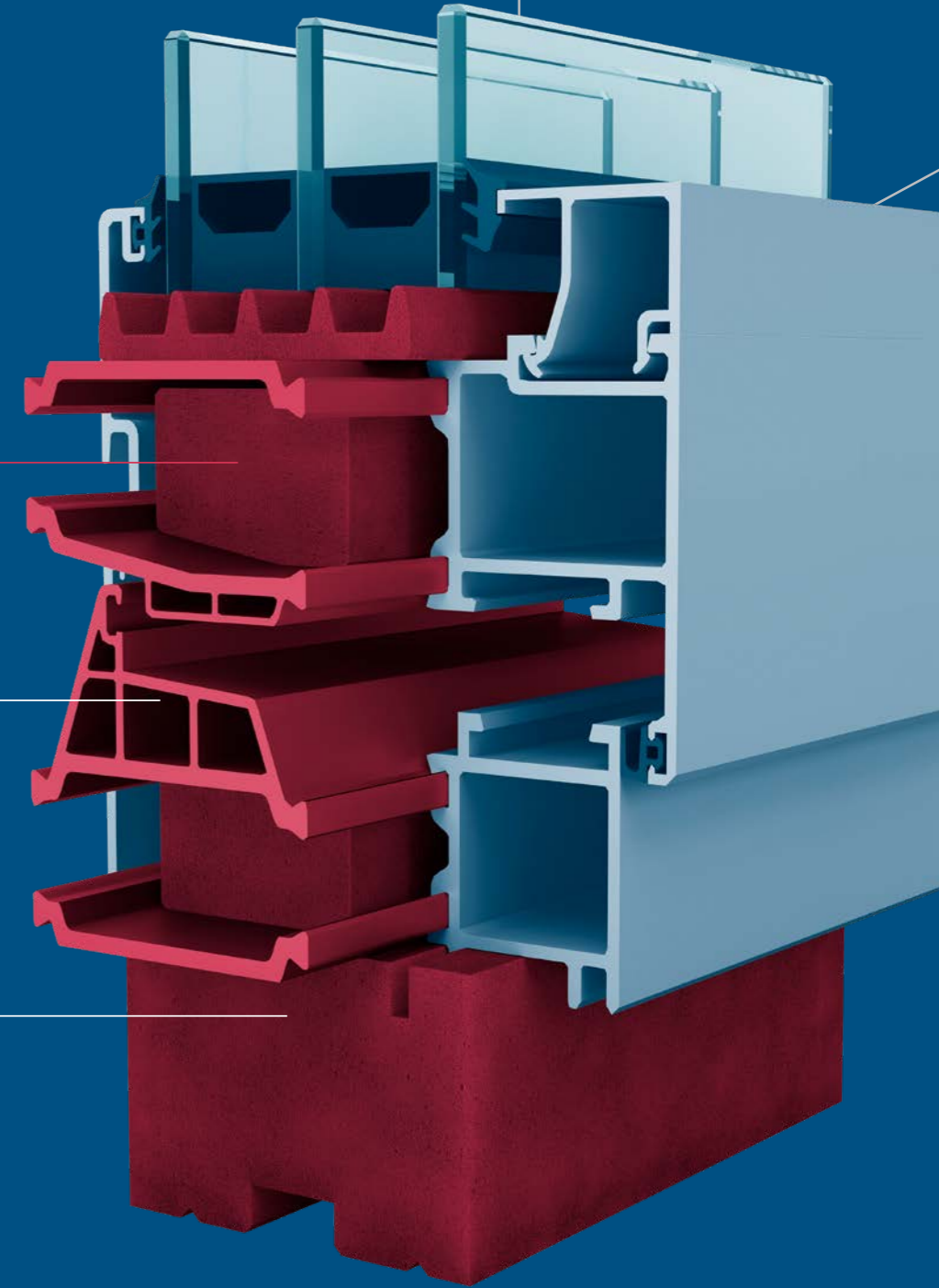
Insulation foams for the lowest U-values

THERMAL BREAKS

Thermal breaks for the highest requirements

INSUFOX

Substructure profiles with the best characteristics for the lowest U-values



INSULATION AT ITS BEST

WITH OUR INSULATION FOAMS

Whether in combination with our thermal breaks or as insulation material in hollow chambers – our insulation foams make a decisive contribution to achieving the best U-values and therefore increase energy efficiency.

Our broad product portfolio includes halogen-free as well as bio-based or high-temperature-resistant materials that meet the current requirements (LEED, DGNB). Our PE foam is also C2C-certified.

This enables us to meet different requirements and at the same time produce in an environmentally friendly and sustainable manner. Low lambda values, reliable fire protection and the best contour accuracy are our main focus, in addition to excellent thermal insulation – the quality of our production is of the highest standard.



Our extensive know-how is based on decades of experience with different technologies and on our own continuous development work.

OUR QUALITIES

PE FOAM:

Suitable for all common applications – a versatile product that you can rely on.

BIO PE FOAM:

PE foam made of renewable raw material, more than 91% bio-based – for environmental protection and sustainability.

HFPE FOAM:

Halogen-free PE foam developed for applications and construction projects that are subject to stringent environmental requirements.

ISOFLEX FOAM:

Very soft foam, extremely high resilience – and therefore specifically designed for winding applications.

HT FOAM:

Can be inserted into the area between the thermal breaks before the powder coating or anodising because of its high temperature and chemical resistance. It can also be inserted retrospectively into aluminium composites that have already been rolled due to its high rigidity.

U-VALUE OPTIMISATION TO PERFECTION

BEST FOAM CHARACTERISTICS FOR THE LOWEST U_F-VALUES

In order to achieve the best U-value when combined, all components must have the lowest possible individual values (U_f and U_w).

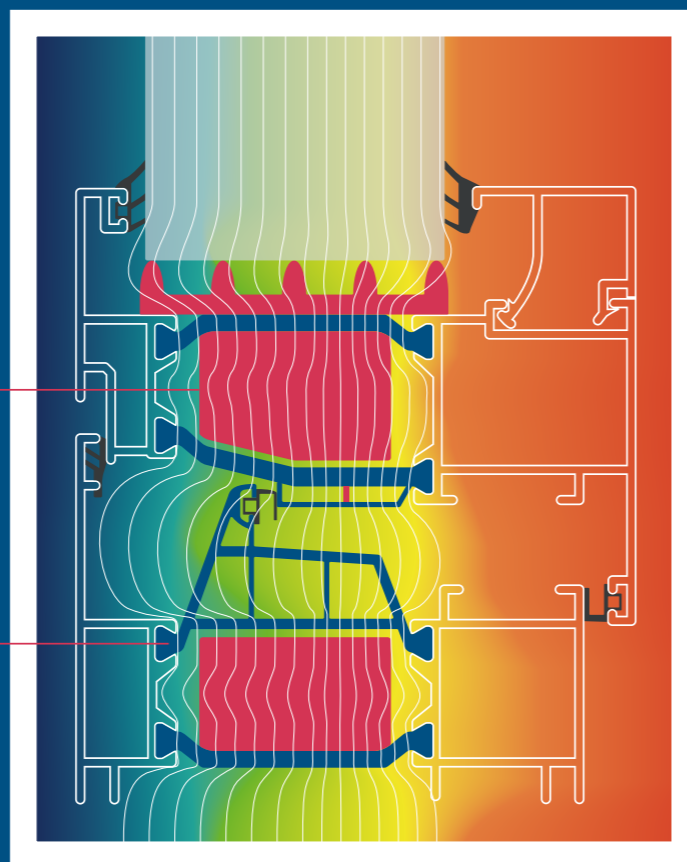
Frame materials such as wood, aluminium or plastic have U_f-values of about 2 in standard construction methods. The value of wood cannot be improved, but that of aluminium and plastic can!

In order to achieve the optimum U_f-value, thermal breaks between the outer and inner shell of the frame are essential.

Our insulation foams achieve the lowest U-values both when combined with our thermal breaks and as standalone insulation material.

Our insulation foams (here in red) reduce the U-value very effectively and, together with our thermal breaks, result in intelligent material combinations.

Our thermal breaks (here in blue) are essential for avoiding heat losses.



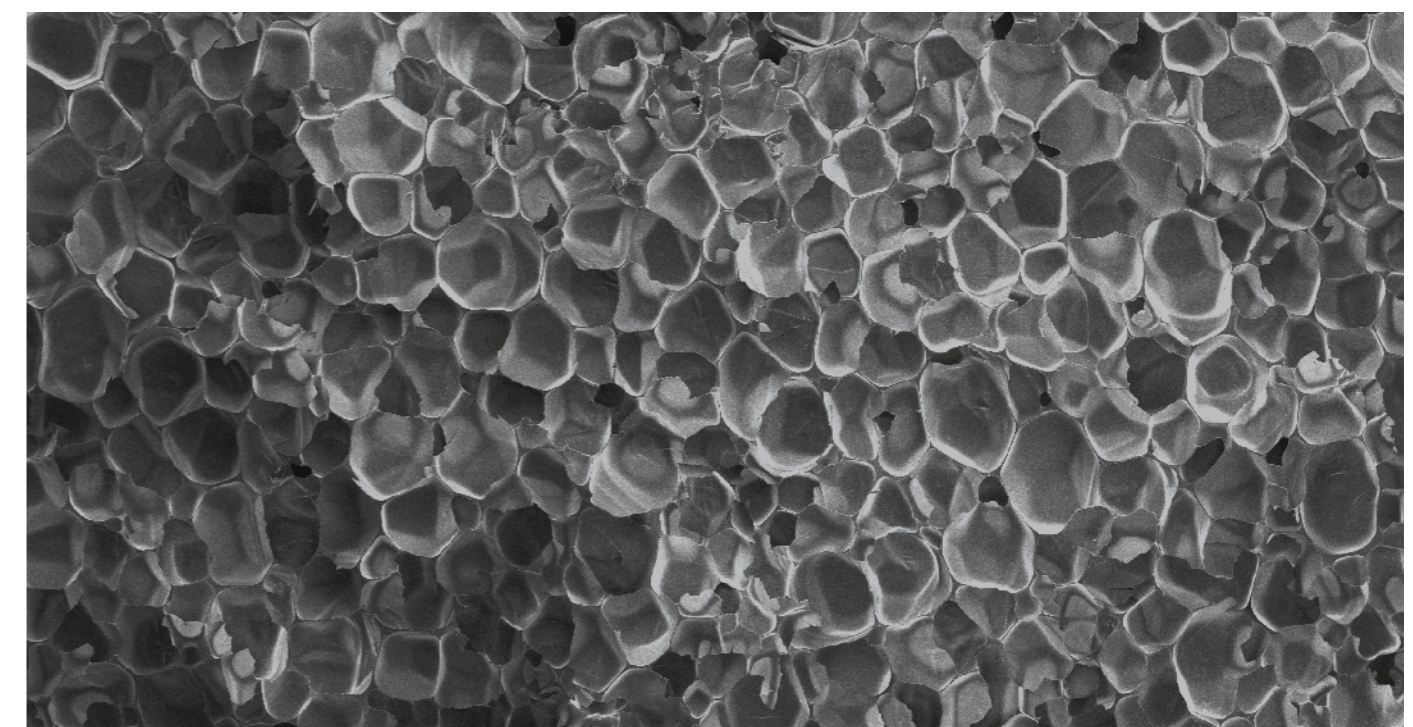
IN COMPARISON

SPECIFICATIONS AND CHARACTERISTICS

The following table gives an overview of the outstanding characteristics of all our insulation foams, typical for the material.

| | PE | BIO PE | HFPE | ISOFLEX | HT |
|------------------------|--------------------|--------------------|--------------------|-------------------|--------------------|
| Lambda value [W/(mK)] | 0.038 | 0.038 | 0.038 | 0.036 | 0.031 |
| Fire protection class | E | E | E | E | E |
| Rebound elasticity | ⬡ | ⬡ | ⬡ | ⬢ | — |
| Elasticity | ⬡ | ⬡ | ⬡ | ⬢ | — |
| Flexural rigidity | — | — | — | — | ⬢ |
| Compressive strength | ⬡ | ⬡ | ⬡ | — | ⬢ |
| Temperature resistance | -40 °C to +100 °C* | -40 °C to +100 °C* | -40 °C to +100 °C* | -40 °C to +70 °C* | -40 °C to +220 °C* |
| Moisture resistance | ⬢ | ⬢ | ⬢ | ⬢ | ⬢ |

⬢ very well suited ⬡ well suited — not suitable * short-term usage



The closed-cell structure of our insulation foams under the microscope.

PRODUCTION PROCESSES

HOW OUR FOAMS ARE CREATED

Up to the point that our high-quality raw materials and additives are used to create a wide range of fine-pored foam profiles with the best insulation characteristics, precise planning is initially required in close consultation with our customers.

We develop precisely tailored formulations based on our more than 30 years of experience and extensive material expertise.

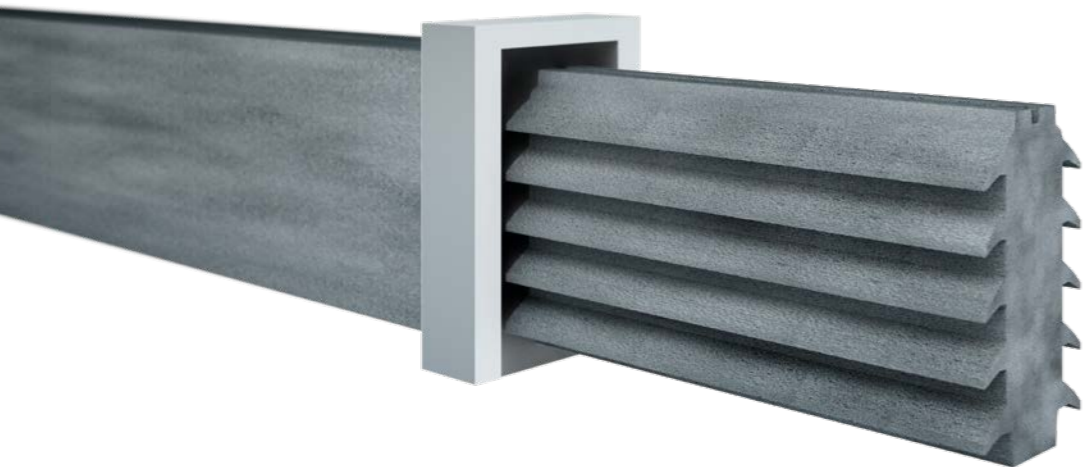
The extrusion of the profiles enables continuous production. To this end, we make the tools ourselves in order to realise complex profile geometries and optimally respond to individual customer requirements.

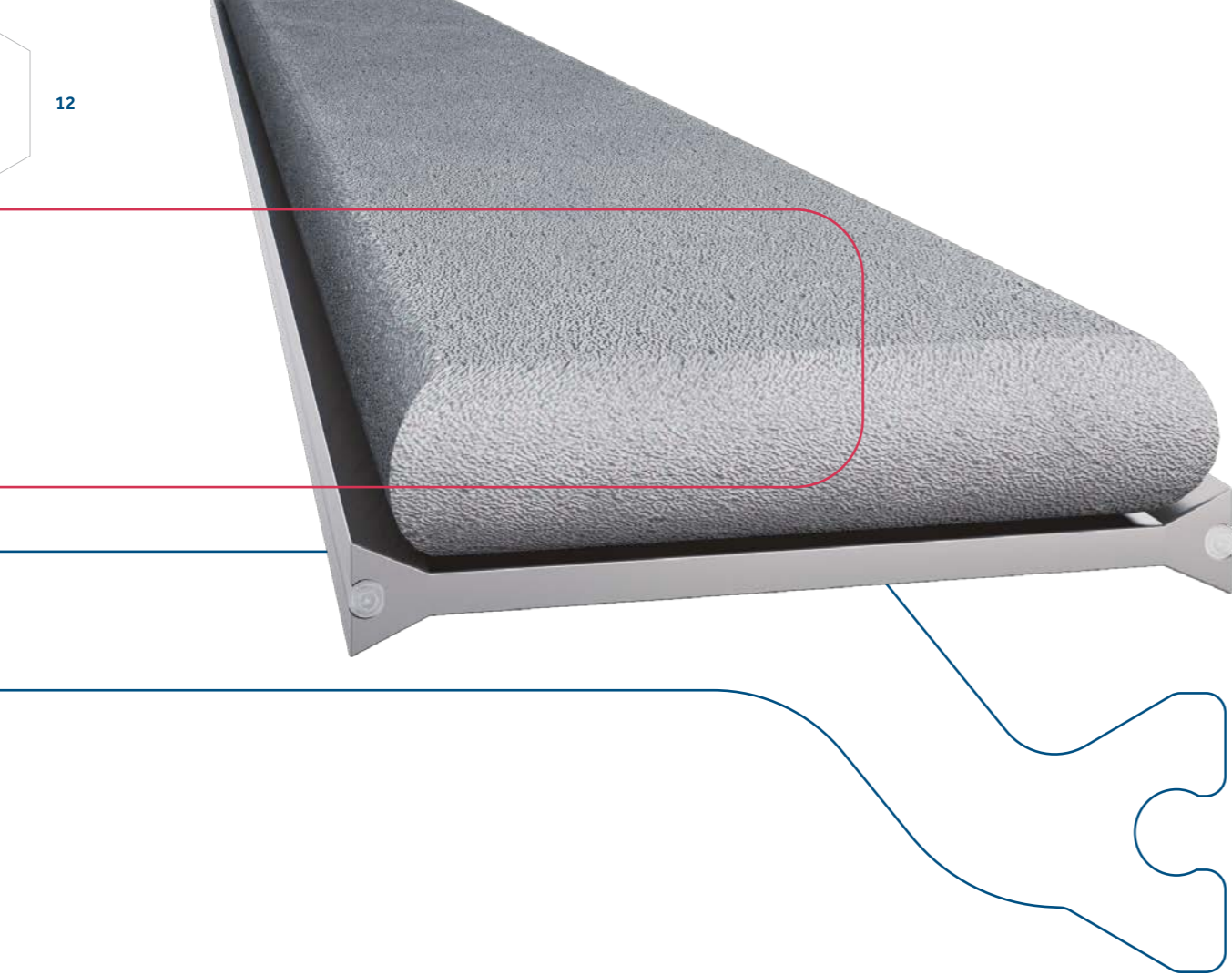
Thanks to our patented cutting process, there are also no limits in terms of the design. Whether spikes, grooves or undercuts: we produce sharp contours and create surfaces that feel rough.

The foam itself retains its excellent softness and uniformity as well as all other characteristics, such as the fire class and thermal conductivity value. Above all, it retains its closed-cell structure and does not absorb moisture.

Our foams can be intelligently combined with our thermal breaks and/or processed further with a finishing technique.

Sophisticated formulations guarantee consistent quality and reliable characteristics values.





COMBINATIONS

FOAM MEETS THERMAL BREAK

WE CREATE COMBINATIONS – OUR CUSTOMERS BENEFIT

The combination of our foams with our thermal breaks produces intelligent material combinations that result in even better insulation values – and therefore higher cost savings for the end user.

Through intensive research and development, we have identified the best material combinations:

Our PA thermal breaks are ideally combined with our HT foam, while our ABS composite strips are combined with PE foam. This guarantees the best results.

WHICH SYSTEMS ARE COMPATIBLE?

There are no restrictions with regard to compatibility. Our foams are ideally suited for **ALL** window and façade systems due to their maximum flexibility in manufacturing processes and production according to individual customer requirements.

FINISHING

ABOVE AND BEYOND THE INSULATION CHARACTERISTICS

Our insulation foams can be finished / further processed in the following ways:

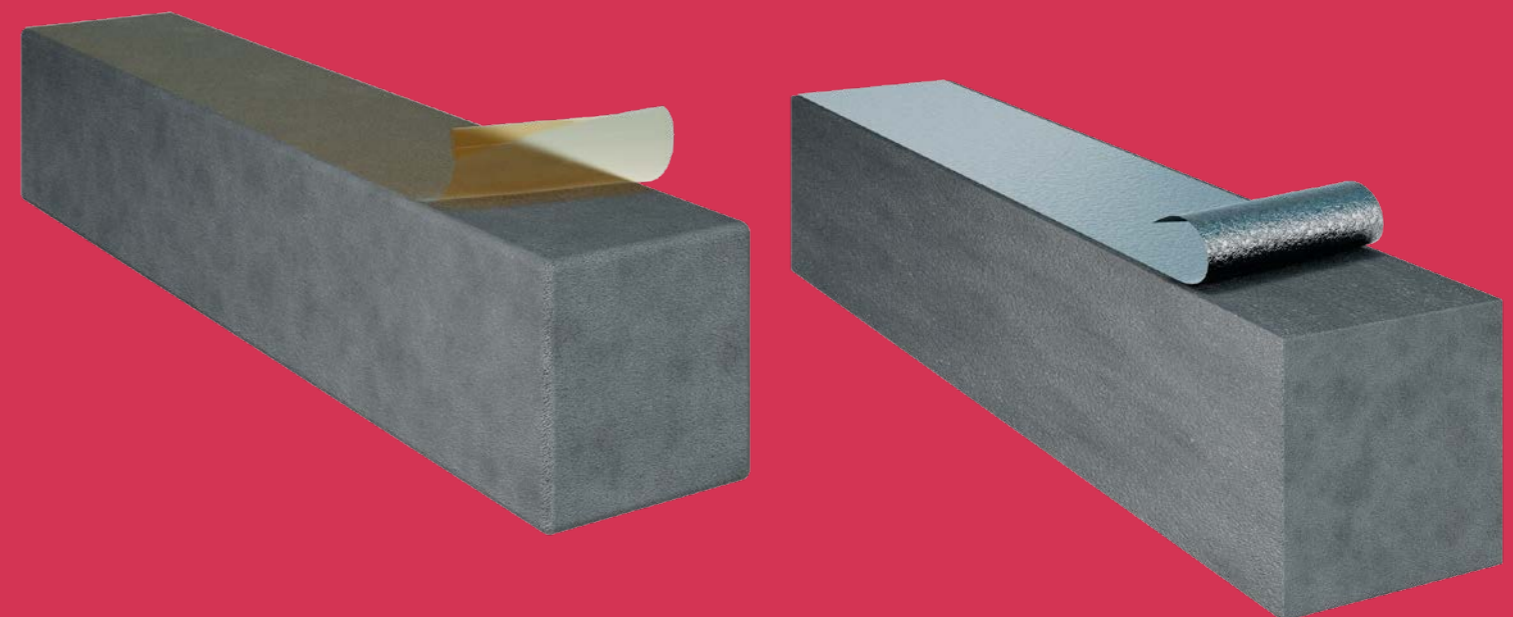
- Metal foil lamination to provide reflection, thus improving the heat transfer coefficient
- Cut-outs or blanks
- Perforation for adjustment or separation
- Hot-melt adhesive tape as an additional fixing aid

We know the technical challenges and are constantly working on innovative solutions.

Combinations of these options can be realised at any time because our solutions are as individual as the requirements of our customers.



Find out more details in our animation video.





HOW WE SUPPLY OUR FOAMS

TO SUIT YOUR WAREHOUSE LOGISTICS

In order to respond to the respective storage conditions of our customers and to make the handling of the incoming goods as easy as possible, our insulation foams are supplied as follows according to the customer's specifications.

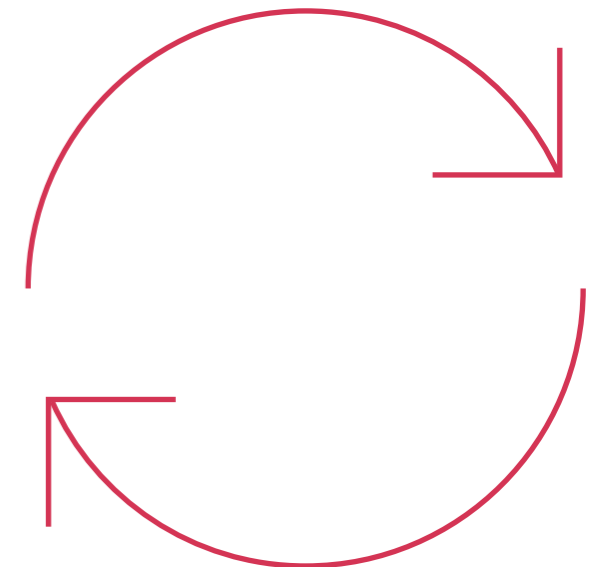
ROLLED IN A CARDBOARD BOX

SPOOLED CONTINUOUSLY ON LARGE COILS

CUT TO LENGTH BY THE METRE

SMALL PARTS AS BULK GOODS

SPECIAL DESIGNS ON REQUEST





Many say that only renunciation will help retain our planet's appeal. We say: "There's more to it!"

WHAT DOES SUSTAINABILITY MEAN FOR GARGIULO?

A KEY TOPIC IN THE CORPORATE STRATEGY

For us, sustainability is more than resource conservation and CO₂ reduction – it is a central component of our corporate strategy. Our innovative products actively contribute to sustainable living and create buildings that combine the environment and quality of life. Here we think beyond pure environmental protection: Our goal is to meet today's needs without jeopardising the opportunities of future generations.

MORE RESPONSIBILITY = MORE QUALITY

A key part of GARGIULO's sustainability strategy is an active integrated management system for quality, energy and the environment – from raw material procurement and production to logistics and waste disposal. To be able to offer high-quality and individual products, GARGIULO sets high quality standards – for employees, work processes, materials and production facilities. All products naturally meet the special national and international standards, such as RAL in Germany, CSTB in France and ATG in Belgium. We ensure the highest quality standards with our production that is carried out almost completely in-house. 24/7 monitoring and strict testing in our own laboratory guarantee standard-compliant products. Our quality management system has been ISO 9001:2015 certified since 2017 and has been continuously improved since then. The main goal here is to ensure the highest standards with all products and services in all departments and processes. This not only prevents errors, but also ensures continuous improvement in all products and processes. The development of innovative, sustainable products that make a decisive contribution to the environment and climate protection with the highest quality and environmental standards is particularly important to us.

MORE ENERGY EFFICIENCY

GARGIULO introduced its own energy management system in 2013 in order to identify potential savings and to improve energy efficiency in the long term. In 2014, the system was successfully certified in accordance with ISO 50001. In this way, we make an important contribution to environmental protection and are also involved in regional energy-saving projects.

MORE ENVIRONMENTAL AWARENESS

In order to improve environmental protection, GARGIULO introduced an environmental management system in 2017 and had it certified in accordance with ISO 14001. National and statutory requirements are considered the minimum standard. All products are tested for their entire life cycle in order to optimally recycle valuable raw materials. We rely on recyclable materials and almost 100% recyclability through our own recycling mills.

MORE POWER

Our photovoltaic systems together generate an impressive 2 megawatts of clean electricity at two locations, making a valuable contribution to the energy transition. With state-of-the-art photovoltaic technology, we focus on maximum efficiency and sustainability – for a climate-friendly future.

OUR HFPE FOAM

HAS THE FOLLOWING SUSTAINABILITY CHARACTERISTIC:

- Cradle to Cradle Certificate GOLD

OUR CERTIFICATION PARTNERS



WE ARE GARGIULO

We are specialists in profile production and in the development of individual customer solutions. A total area of approximately 80,000 m² offers sufficient space for more than 80 production lines as well as for the storage, picking and development of plastic profiles.

Our production sites are located exclusively in Germany in the heart of Baden-Württemberg, well-known for German engineering and innovation. We combine decades of experience, precise production and the highest quality standards – “made in Germany”.

From intelligent profile technology with excellent insulation values (INSULATION) and complex systems (SYSTEMS) to the constant development of new processes, materials and systems for greater efficiency and sustainability (MOVES) – we are the right partner!



INSULATION

Our thermal breaks for window and façade systems are largely responsible for higher insulation values.



SYSTEMS

We are both a complete supplier of extrusion solutions and a producer of our own profile and window systems.



MOVES

As visionaries and inventors with passion, we are always on the move and are constantly working on new solutions and technologies.



Approx. 80,000 m²

Total area available for the production, storage, picking and development of plastic profiles.

80 production lines

produce thermal breaks (PA + ABS), insulation foams (PE + PET), profiles (PVC + ASA) and our own PVC window systems.

More than 60 extruders

run simultaneously in all plants and guarantee on-time production with high output rates.

More than 12,000 tons

of raw materials (approx. 500 truck loads) are processed each year. This figure underlines our performance.

630 million metres of profiles

have been produced in the last 30 years. In whole, this length corresponds to almost 16 times the circumference of the earth.

180 employees

with 20 different nationalities. 13 of them have over 20 years of service with the company. Their average age is 42 years old.

WOULD YOU LIKE TO KNOW MORE ABOUT OUR PRODUCT PORTFOLIO OR OUR MATERIALS?

**DROP US A LINE – WE LOOK FORWARD TO RECEIVING
YOUR MESSAGE!**

Your contact:

Marcus Müller
vertrieb@gargiulo.de



GARGIULO GMBH

Daimlerstr. 21 | 72147 Nehren | Germany

Tel.: +49 7473 9438-0

Fax: +49 7473 9438-250

Email: info@gargiulo.de

www.gargiulo.de

**MADE
IN
GERMANY**

GARGIULO is a German company
based in Baden-Württemberg,
producing exclusively in Germany.

